

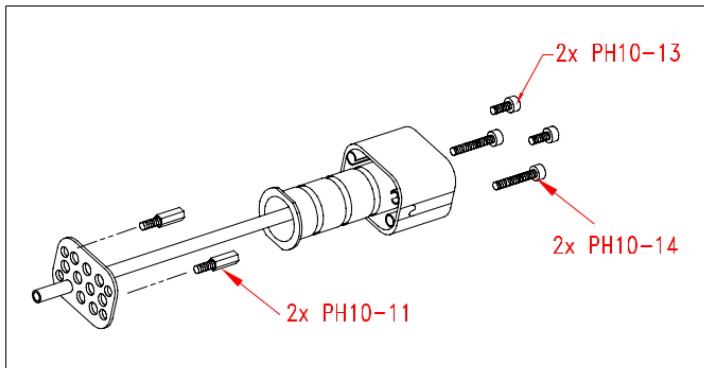
ISSUE DATE:	2/5/26
ISSUED BY:	SILAS V.
DISTRIBUTION TYPE:	ALL
DISTRIBUTION DATE:	2/5/26
URGENCY:	MEDIUM

EQUIPMENT LINE:	BARGUN
MODEL(S):	10B, 6B, ENERGY
SN RANGE:	N/A
DATE OF CHANGE:	N/A
CHANGE TYPE:	FACTORY, SERVICE

BULLETIN TITLE:	SPLIT HEEL / HARDWARE UPDATE
DOC NUMBER:	WB-TFN2622

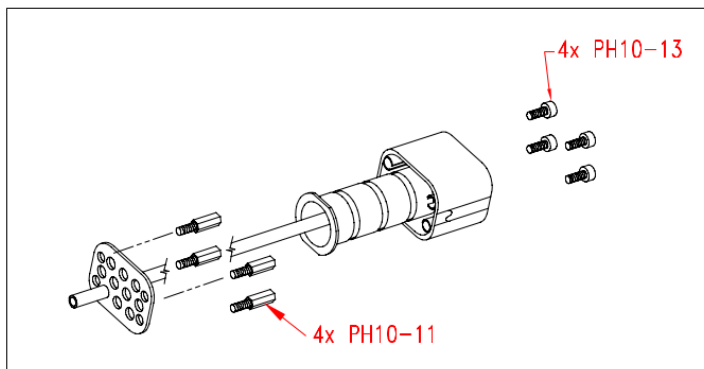
DESCRIPTION OF NOTICE: CHANGE TO M4 BARGUN SPLIT HEEL AND HARDWARE; **UPDATED PH10-138 AND PH10-137 IMPACTING BARGUNS BUILT FROM 10-BRAND, 6-BRAND, AND ENERGY PLATFORMS**

REASON FOR NOTICE: THE BARGUN SPLIT HEEL SERVES AN IMPORTANT FUNCTION ON THE INCOMING PRODUCT TUBING SET, PROVIDING PROTECTION FOR THE SEALING COMPONENT (FITTINGS, ORINGS). DUE TO REPORTS OF DAMAGE TO HEELS AND LOSS OF TENSION ON THE HEEL PLATE WHICH SEALS THE TUBES IN PLACE, WUNDERBAR HAS UPGRADED THE METHOD BY WHICH THE SPLIT HEEL IS ATTACHED. THE FOLLOWING FIGURES WILL HELP ILLUSTRATE HOW THE CHANGE IMPACTS THE NEW HEEL DESIGN.



PREVIOUS ASSEMBLY:

USES X2 SHORT SCREWS (PH10-13) GOING INTO HEX STAND-OFFS (PH10-11) AND X2 LONGER SCREWS (PH10-14) THAT ARE TENSIONED ON THE INTEGRATED HEEL STAND-OFF



UPDATED ASSEMBLY:

USES X4 SHORT SCREWS (PH10-13) GOING INTO HEX STAND-OFFS (PH10-11), **NOTE: LONGER SCREWS (PH10-14) ARE NOT USED**

IMPACT OF CHANGE: NEW 10 BRAND BARGUNS WILL BE PRODUCED WITH THE UPDATED ASSEMBLY AS STANDARD. FOR RETROFIT SCENARIOS, EITHER A NEW HEEL IS NEEDED WITH THE APPROPRIATE HARDWARE, OR A KIT MAY BE PURCHASED WHICH HAS THE HEEL AND X4 OF EACH SCREWS AND STAND-OFFS NEEDED. PLEASE CONTACT WUNDER-BAR SALES FOR THE APPROPRIATE KIT PART NUMBER WHEN ORDERING.