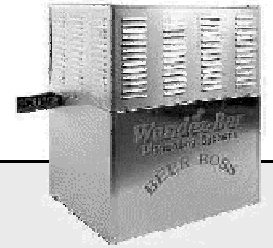


BEER BOSS BEER SYSTEM COMPONENTS

FACTORY SUGGESTED LIST PRICE SCHEDULE

EFFECTIVE: JANUARY 1, 2010



Glycol Chillers and Accessories

Standard Beer Boss Glycol Chillers

Standard configuration for floor and wall mounting applications.

Model Number	Description	Weight	List Price
WB-BB-300-1	1/3 HP Glycol Chiller - 2,000 BTU/hour - 175' total conduit *	225	\$3,050.00
WB-BB-500-1	1/2 HP Glycol Chiller - One pump - 3,000 BTU/hour - 250' total conduit *	225	\$3,600.00
WB-BB-500-2	1/2 HP Glycol Chiller - Two pump - 3,000 BTU/hour - 250' total conduit *	240	\$4,150.00
WB-BB-500-3	1/2 HP Glycol Chiller - Three pump - 3,000 BTU/hour - 250' total conduit *	255	\$4,725.00
WB-BB-500-4	1/2 HP Glycol Chiller - Four pump - 3,000 BTU/hour - 250' total conduit *	270	\$5,300.00
WB-BB-750-1	3/4 HP Glycol Chiller - One pump - 4,700 BTU/hour - 350' total conduit *	320	\$4,770.00
WB-BB-750-2	3/4 HP Glycol Chiller - Two pump - 4,700 BTU/hour - 350' total conduit *	335	\$5,350.00
WB-BB-750-3	3/4 HP Glycol Chiller - Three pump - 4,700 BTU/hour - 350' total conduit *	350	\$5,922.00
WB-BB-750-4	3/4 HP Glycol Chiller - Four pump - 4,700 BTU/hour - 350' total conduit *	365	\$6,500.00
WB-BB-1000-1	1 HP Glycol Chiller - One pump - 7,800 BTU/hour - 500' total conduit *	320	\$5,276.00
WB-BB-1000-2	1 HP Glycol Chiller - Two pump - 7,800 BTU/hour - 500' total conduit *	335	\$5,854.00
WB-BB-1000-3	1 HP Glycol Chiller - Three pump - 7,800 BTU/hour - 500' total conduit *	350	\$6,432.00
WB-BB-1000-4	1 HP Glycol Chiller - Four pump - 7,800 BTU/hour - 500' total conduit *	365	\$7,010.00
WB-BB-1500-2	1-1/2 HP Glycol Chiller - Two pump - 12,000 BTU/hour - 1000' total conduit *	400	\$6,900.00
WB-BB-1500-3	1-1/2 HP Glycol Chiller - Three pump - 12,000 BTU/hour - 1000' total conduit *	415	\$7,480.00
WB-BB-1500-4	1-1/2 HP Glycol Chiller - Four pump - 12,000 BTU/hour - 1000' total conduit *	430	\$8,060.00

Low Profile and Water-Cooled Beer Boss Glycol Chillers Available - Please call the factory for pricing

Low Profile configuration for cooler top mounting and other height-limited applications.

* Applies to standard conduit with standard beer towers. Please inquire for job-specific VIPER Tower and Conduit length specifications.

Wall Bracket & Stands for Standard Beer Boss Glycol Chillers

Wall and Floor Stand assemblies for standard Beer Boss Glycol Chillers. Stainless Steel Construction.

Model Number	Description	Weight	List Price
WB-BB-WS-300	Wall mounting stand for 1/3 and 1/2 hp Standard Beer Boss chillers	15	\$224.00
WB-BB-FS-300	Floor Stand for 1/3 and 1/2 hp standard Beer Boss chillers	70	\$704.00
WB-BB-FS-750	Floor Stand for 3/4 and 1 hp standard Beer Boss chillers	70	\$704.00

Glycol

Model Number	Description	Weight	List Price
WB-GL	One-Gallon Glycol (mix 50% Glycol to 50% water mixture for Beer Boss)	8	\$50.00
WB-GL-5	5-Gallon Container of Glycol (mix 50% Glycol to 50% water mixture for Beer Boss)	45	\$240.00

1/3, 1/2 HP Beer Boss: 4 gallons for Chiller and 100' conduit. 3/4, 1 hp Beer Boss: 5 gallons for Chiller and 100' conduit. Add 1 gallon per 100' conduit.

Prices subject to change without notice.

AUTOMATIC BAR CONTROLS, INC.

Setting the standards for over thirty five years.

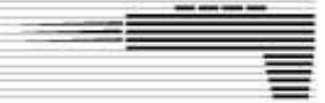
790 Eubanks Drive

Vacaville, California 95688

Facsimile

(707) 448-5151

(707) 448-1521

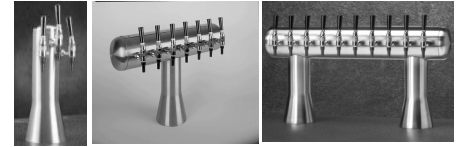


BEER BOSS BEER SYSTEM COMPONENTS

FACTORY SUGGESTED LIST PRICE SCHEDULE

EFFECTIVE: JANUARY 1, 2010

Stainless One Beer Faucets, Shanks, Towers and Drainers



Part Number	Description	Weight	List Price
FAUCETS			
70-0001-00	Stainless One Lager Faucet only	1	\$ 140.00
70-0001-01	Stainless One Lager Faucet only, 24K gold-plated	1	\$ 175.00
70-0005-00	Stainless One Stout Faucet only	1	\$ 162.00
70-0005-01	Stainless One Stout Faucet - 24K gold-plated	1	\$ 198.00
FAUCET ACCESSORIES			
10-0012-00	Lager Nozzle with O-ring	1	\$ 7.50
40-0003-00	Stout Nozzle Kit with O-ring, exploder plate & flow straightener	1	\$ 31.50
40-0005-00	Cleaning Connector (one per faucet required)	1	\$ 31.50
40-0006-00	Cleaning Jumper Kit (Includes 2 connectors with jumper hose)	3	\$ 65.00
40-0025-10	Faucet Lock for Stainless One Lager & Stout Faucets Only - includes 2 keys	1	\$ 68.00
70-0500-00	Growler Filler with 10" hose	1	\$ 24.00
20-0006-00	Faucet Seal Kit - Lager or Stout Faucets (Nozzle, cork & plunger o-rings & shank seal)	1	\$ 6.50
SHANKS			
70-0003-00	2" Stainless Steel Shank with barbed inlet, collar, nut & ring	1	\$ 76.00
70-0003-01	2" Stainless Steel Shank with barbed inlet, 24K gold-plated collar, nut & ring	1	\$ 84.00
70-0008-00	2" Stainless Steel Shank with John Guest inlet collar, nut & ring	1	\$ 84.00
70-0008-01	2" Stainless Steel Shank with John Guest inlet, 24K gold-plated collar, nut & ring	1	\$ 88.00
70-0006-00	3" Stainless Steel Shank with barbed inlet, collar, nut & ring	1	\$ 88.00
70-0006-01	3" Stainless Steel Shank with barbed inlet, 24K gold-plated collar, nut & ring	1	\$ 102.00
70-0004-00	4" Stainless Steel Shank with barbed inlet, collar, nut & ring	2	\$ 106.00
70-0004-01	4" Stainless Steel Shank with barbed inlet, 24K gold-plated collar, nut & ring	2	\$ 116.00
COLUMN TOWERS (Drainers sold separately)			
75-0104-00	1-Faucet Column Tower, grainline stainless finish, Stainless One lager faucet	16	\$ 662.00
75-0204-00	2-Faucet Column Tower, grainline stainless finish, Stainless One lager faucets	18	\$ 894.00
75-0304-00	3-Faucet Column Tower, grainline stainless finish, Stainless One lager faucets	20	\$ 1,114.00
TEE TOWERS (Drainers sold separately)			
76-0416-00	4-Faucet Tee Tower, grainline stainless finish, Stainless One lager faucets	40	\$ 1,570.00
76-0516-00	5-Faucet Tee Tower, grainline stainless finish, Stainless One lager faucets	45	\$ 1,796.00
76-0616-00	6-Faucet Tee Tower, grainline stainless finish, Stainless One lager faucets	50	\$ 2,164.00
76-0716-00	7-Faucet Tee Tower, grainline stainless finish, Stainless One lager faucets	55	\$ 2,260.00
76-0816-00	8-Faucet Tee Tower, grainline stainless finish, Stainless One lager faucets	60	\$ 2,480.00
76-1016-00	10-Faucet Tee Tower, grainline stainless finish, Stainless One lager faucets	75	\$ 2,910.00
PASS-THROUGH TOWERS (Double Pedestals) - (drainers sold separately)			
77-1016-00	10-Faucet Pass-Thru Tower, grainline stainless finish, Stainless One lager faucets	75	\$ 3,384.00
77-1216-00	12-Faucet Pass-Thru Tower, grainline stainless finish, Stainless One lager faucets	80	\$ 3,634.00
77-1416-00	14-Faucet Pass-Thru Tower, grainline stainless finish, Stainless One lager faucets	100	\$ 3,980.00

All towers are sold with Stainless One lager faucets, 7-ft. of 3/16" I.D. restriction tubing, 3/8" I.D. coolant lines & black faucet handles.

Prices subject to change without notice.



BEER BOSS BEER SYSTEM COMPONENTS

FACTORY SUGGESTED LIST PRICE SCHEDULE

EFFECTIVE: JANUARY 1, 2010

Stainless Steel surface mount drip trays - includes pan, grid(s) & drain fittings 1/2" NPT			
Model Number	Description	Weight	List Price
71-0010-00	10" long by 6" wide CURVED RECESS (for 1 to 3-faucet Column Towers)	1	\$ 160.00
71-0010-01	10" long by 6" wide (for 2 to 3-faucet Tee Towers)	1	\$ 160.00
71-0015-00	15" long by 6" wide (for 4-faucet Tee Towers)	2	\$ 198.00
71-0021-00	21" long by 6" wide (for 5 & 6-faucet Tee Towers)	5	\$ 212.00
71-0027-00	27" long by 6" wide (for 7 & 8-faucet Tee Towers)	8	\$ 306.00
71-0033-00	33" long by 6" wide (for 10-faucet Tee & Pass-Thru Towers)	10	\$ 326.00
71-0039-00	39" long by 6" wide (for 12-faucet Pass-Thru Towers)	15	\$ 360.00
71-0045-00	45" long by 6" wide (for 14-faucet Pass-Thru Towers)	20	\$ 410.00

Column Towers and Drainers

Two, three, or four faucet Draft Arm Towers are available with either a Chrome, Mirror Finish, or Polished Brass Finish.

Drainers sold separately.



Model Number	Description	Weight	List Price
WB-CH-1	One Faucet, Polished Stainless, 3" dia. column Tower	18	\$ 380.00
WB-CH-2	Two Faucet, Polished Stainless, 3" dia. column Tower	20	\$ 440.00
WB-CH-3	Three Faucet, Polished Stainless, 4" dia. column Tower	20	\$ 754.00
WB-CH-4	Four Faucet, Mirror Finish Stainless Steel, 4" dia. column Tower	22	\$ 1,160.00
WB-CH-1	One Faucet, Chrome, 3" dia. column Tower	18	\$ 404.00
WB-BR-2	Two Faucet, Polished Brass, 3" dia. column Tower	20	\$ 462.00
WB-BR-3	Three Faucet, Polished Brass, 4" dia. column Tower	20	\$ 780.00
WB-BR-4	Four Faucet, Polished Brass, 4" dia. column Tower	22	\$ 1,160.00
WB-BD-CH	Stainless Drainer for two faucet chrome tower	2	\$ 112.00
WB-BD-BR	Brass Drainer for two faucet Polished Brass Tower	2	\$ 204.00
WB-BD-CH3	Stainless Drainer for three and four faucet chrome tower	3	\$ 246.00
WB-BD-BR3	Brass Drainer for three and four faucet Polished Brass tower	2	\$ 486.00

Beer Towers & Drainers

Grainline Stainless Steel Tee Towers - (set up for glycol cooling)

Grainline stainless steel Tee Towers. Three to eight faucet towers have one vertical column.

Ten and twelve faucet double Tee Towers have two vertical columns. Drainers sold separately.



Model Number	Description	Weight	List Price
WB-BTT-SS-3	Three Faucet, Grainline stainless steel, Tee Tower	32	\$966.00
WB-BTT-SS-4	Four Faucet, Grainline stainless steel, Tee Tower	33	\$1,050.00
WB-BTT-SS-5	Five Faucet, Grainline stainless steel, Tee Tower	34	\$1,140.00
WB-BTT-SS-6	Six Faucet, Grainline stainless steel, Tee Tower	35	\$1,524.00
WB-BTT-SS-8	Eight Faucet, Grainline stainless steel Tee Tower	46	\$2,016.00
WB-BPT-SS-10	Ten Faucet, Grainline stainless steel, Double Tee Tower	52	\$2,340.00
WB-BPT-SS-12	Twelve Faucet, Grainline stainless steel, Double Tee Tower	58	\$2,840.00

Prices subject to change without notice.

AUTOMATIC BAR CONTROLS, INC.

Setting the standards for over thirty five years.

790 Eubanks Drive

Vacaville, California 95688

Facsimile

(707) 448-5151

(707) 448-1521



BEER BOSS BEER SYSTEM COMPONENTS

FACTORY SUGGESTED LIST PRICE SCHEDULE

EFFECTIVE: JANUARY 1, 2010

Mirror Finish Stainless Steel Tee Towers - (set up for glycol cooling)

Mirror-Finish stainless steel Tee Towers. Three to eight faucet towers have one vertical column. Ten and twelve faucet double Tee Towers have two vertical columns. **Drainers sold separately.**



Model Number	Description	Weight	List Price
WB-BTT-MF-3	Three Faucet, Mirror Finish stainless steel, Tee Tower	32	\$1,092.00
WB-BTT-MF-4	Four faucet, Mirror Finish stainless steel, Tee Tower	33	\$1,176.00
WB-BTT-MF-5	Five faucet, Mirror Finish stainless steel, Tee Tower	34	\$1,428.00
WB-BTT-MF-6	Six Faucet, Mirror Finish stainless steel, Tee Tower	35	\$1,680.00
WB-BTT-MF-8	Eight faucet, Mirror Finish stainless steel Tee Tower	46	\$2,184.00
WB-BPT-MF-10	Ten faucet, Mirror Finish stainless steel, Double Tee Tower	52	\$2,594.00
WB-BPT-MF-12	Twelve faucet, Mirror Finish stainless steel, Double Tee Tower	58	\$3,014.00

Polished Brass Tee Towers

Polished Brass Tee Towers. Three to eight faucet towers have one vertical column. Ten and twelve faucet double Tee Towers have two vertical columns. **Drainers sold separately.**



Model Number	Description	Weight	List Price
WB-BTT-BR-3	Three Faucet, Polished Brass Tee Tower	32	\$1,124.00
WB-BTT-BR-4	Four Faucet, Polished Brass Tee Tower	33	\$1,208.00
WB-BTT-BR-5	Five Faucet, Polished Brass Tee Tower	34	\$1,470.00
WB-BTT-BR-6	Six Faucet, Polished Brass Tee Tower	35	\$1,734.00
WB-BTT-BR-8	Eight Faucet, Polished Brass Tee Tower	46	\$2,260.00
WB-BPT-BR-10	Ten faucet, Polished Brass, Double Tee Tower	52	\$2,680.00
WB-BPT-BR-12	Twelve faucet, Polished Brass, Double Tee Tower	58	\$3,108.00

Wall-Mount Type Beer Dispensers

Grainline Stainless Steel finish - (set up for glycol cooling). **Drainers sold separately.**

WB-WT-SS-4	Four Faucet, Stainless Steel finish, Wall Mount Dispenser	32	\$1,050.00
WB-WT-SS-6	Six Faucet, Stainless Steel finish, Wall-Mount Dispenser	34	\$1,524.00
WB-WT-SS-8	Eight Faucet, Stainless Steel finish, Wall-Mount Dispenser	36	\$2,016.00

Under-Counter Type Beer Dispensers & Drainers

Grainline Stainless Steel finish - (set up for glycol cooling). **Drainers sold separately.**

WB-UC-SS-4	Four Faucet, Stainless Steel finish, Under-Counter Type Dispenser	30	\$1,050.00
WB-UC-SS-6	Six Faucet, Stainless Steel finish, Under-Counter Type Dispenser	32	\$1,524.00
WB-UC-SS-8	Eight Faucet, Stainless Steel finish, Under-Counter Type Dispenser	34	\$2,016.00

Wall-Mount or Under-Counter Type Beer Drainers

Grainline Stainless Steel finish

WB-WM-BD-SS-4	Drainer for 4-faucet Wall-Mount or Under-Counter type dispensers	6	\$300.00
WB-WM-BD-SS-6	Drainer for 6-faucet Wall-Mount or Under-Counter type dispensers	8	\$340.00
WB-WM-BD-SS-8	Drainer for 8-faucet Wall-Mount or Under-Counter type dispensers	10	\$380.00

VIPER Towers

Chrome Flooded ICE VIPER Towers - (set up for glycol cooling)

Flooded Chrome ICE VIPER Towers include chrome-plated faucets, all mounting hardware, all necessary fittings & a 7-foot insulated tubing pigtail that includes one 3/16"ID restriction tube per brand & two 3/8" I.D. glycol coolant lines.

DRAINERS SOLD SEPARATELY.



Model Number	Description	Weight	List Price
WB-VBT-1-C	One Faucet, Chrome-Plated Ice VIPER Beer Tower (400 BTU/hour each)	32	\$830.00
WB-VBT-2-C	Two Faucet, Chrome-Plated Ice VIPER Beer Tower (600 BTU/hour each)	33	\$1,134.00
WB-VBT-3-C	Three Faucet, Chrome-Plated Ice VIPER Beer Tower (800 BTU/hour each)	34	\$1,440.00
WB-VBT-4-C	Four Faucet, Chrome-Plated Ice VIPER Beer Tower (1000 BTU/hour each)	40	\$1,840.00



BEER BOSS BEER SYSTEM COMPONENTS

FACTORY SUGGESTED LIST PRICE SCHEDULE

EFFECTIVE: JANUARY 1, 2010

Gold-Plated Flooded ICE VIPER Towers - (set up for glycol cooling)

Flooded Gold-Plated ICE VIPER Towers include chrome-plated faucets, all mounting hardware, all necessary fittings and a 7-foot insulated tubing pigtail that includes one 3/16" ID restriction tube per brand and two 3/8" ID glycol tubes. **DRAINERS SOLD SEPARATELY.**



Model Number	Description	Weight	List Price
WB-VBT-1-G	One Faucet, Gold-Plated Ice VIPER Beer Tower (400 BTU/hour each)	24	\$830.00
WB-VBT-2-G	Two Faucet, Gold-Plated Ice VIPER Beer Tower (600 BTU/hour each)	27	\$1,134.00
WB-VBT-3-G	Three Faucet, Gold-Plated Ice VIPER Beer Tower (800 BTU/hour each)	32	\$1,440.00
WB-VBT-4-G	Four Faucet, Gold-Plated Ice VIPER Beer Tower (1000 BTU/hour each)	36	\$1,840.00

Chrome Non-Flooded VIPER Towers - (set up for glycol cooling)

Non-Flooded Chrome VIPER Towers include chrome-plated faucets, all mounting hardware, fittings, and a 7-foot insulated tubing pigtail that includes one 3/16" ID restriction tube per brand & 3/8" glycol coolant lines.



DRAINERS SOLD SEPARATELY.

Model Number	Description	Weight	List Price
WB-VBT-1-C-NF	One Faucet, Chrome Non-Flooded VIPER Beer Tower (150 BTU/hour)	24	\$620.00
WB-VBT-2-C-NF	Two Faucet, Chrome Non-Flooded VIPER Beer Tower (175 BTU/hour)	27	\$1,082.00
WB-VBT-3-C-NF	Three Faucet, Chrome Non-Flooded VIPER Beer Tower (175 BTU/hour)	32	\$1,450.00
WB-VBT-4-C-NF	Four Faucet, Chrome Non-Flooded VIPER Beer Tower (200 BTU/hour)	36	\$1,922.00

Gold Non-Flooded VIPER Towers - (set up for glycol cooling)

Non-Flooded Chrome VIPER Towers include chrome-plated faucets, all mounting hardware, fittings, and a 7-foot insulated tubing pigtail that includes one 3/16" ID restriction tube per brand & 3/8" glycol coolant lines.



DRAINERS SOLD SEPARATELY.

Model Number	Description	Weight	List Price
WB-VBT-1-G-NF	One Faucet, Gold Non Flooded VIPER Beer Tower (150 BTU/hour each)	18	\$620.00
WB-VBT-2-G-NF	Two Faucet, Gold Non-Flooded VIPER Beer Tower (175 BTU/hour each)	21	\$1,082.00
WB-VBT-3-G-NF	Three Faucet, Gold Non-Flooded VIPER Beer Tower (175 BTU/hour each)	25	\$1,450.00
WB-VBT-4-G-NF	Four Faucet, Gold Non-Flooded VIPER Beer Tower (200 BTU/hour each)	30	\$1,922.00

VIPER Tower Drainers

Mirror finish stainless steel, double drainers for Ice VIPER Towers. Grainline Stainless Steel standard drainers for Non-Flooded Viper Towers.

Model Number	Description	Weight	List Price
WB-VBT-1-D	Double-Drainer for one, 1 or 2 faucet Ice VIPER Tower (12" L x 12" D)	32	\$530.00
WB-VBT-3-D	Double-Drainer for one, 3 or 4 faucet Ice VIPER Tower (18" L x 12" D)	33	\$580.00
WB-VBT-1-D2	Stainless steel Drainer for two, 1 faucet VIPER Towers (18" L x 12" D)	32	\$596.00
WB-VBT-1-D3	Stainless steel Drainer for three, 1 faucet VIPER Towers (18" L x 12" D)	33	\$596.00
WB-VBT-2-D2	Stainless steel Drainer for two, 2 faucet VIPER Towers (24" L x 12" D)	34	\$650.00
WB-VBT-2-D3	Stainless steel Drainer for three, 2 faucet VIPER Towers (24" L x 12" D)	34	\$710.00
WB-VBT-3-D2	Stainless steel Drainer for two, 3 faucet VIPER Towers (24" L x 12" D)	34	\$710.00
WB-VBT-4-D2	Stainless steel Drainer for two, 4 faucet VIPER Towers (30" L x 12" D)	34	\$798.00
WB-BD-CH	Stainless steel Drainer for 1 and 2 faucet Non-Flooded VIPER Towers	2	\$112.00
WB-BD-CH3	Stainless Steel Drainer for 3 and 4 faucet Non-Flooded VIPER Towers	3	\$250.00

Prices subject to change without notice.



BEER BOSS BEER SYSTEM COMPONENTS

FACTORY SUGGESTED LIST PRICE SCHEDULE

EFFECTIVE: JANUARY 1, 2010

Mushroom Towers & Drainers - (set up for glycol cooling)

Four, five, and six faucet Mushroom beer towers and stainless steel or Polished Brass Beer Drainers.

Model Number	Description	Weight	List Price
WB-CH-MT4	Four Faucet, Chrome-Plated Mushroom Tower	32	\$2,332.00
WB-BR-MT4	Four faucet, Polished Brass Mushroom Tower	33	\$2,442.00
WB-CH-MT5	Five Faucet, Chrome-Plated Mushroom Tower	34	\$2,562.00
WB-BR-MT5	Five faucet, Polished Brass Mushroom Tower	35	\$2,684.00
WB-CH-MT6	Six Faucet, Chrome-Plated Mushroom Tower	46	\$2,804.00
WB-BR-MT6	Six Faucet, Polished Brass Mushroom Tower	46	\$2,940.00
WB-MBD-SS	Mushroom Tower Beer Drainer, Stainless Steel with perforated insert	46	\$380.00
WB-MBD-BR	Mushroom Tower Beer Drainer, Polished Brass with perforated insert	52	\$420.00

Standard Regulator Station Installation Kits

Standard Station Installation Kits include one product and gas keg leader, one low-pressure regulator, and one wall junction per keg, plus necessary fittings and clamps.

Keg connectors are not included. (For more beers use multiples of 2, 3 or 4 install kits)

For example a 10-beer install kit will be (2) 4-beer install kits & (1) 2-beer install kits.

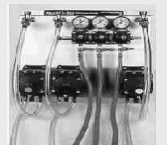
Model Number	Description	Weight	List Price
WB-IK-2	Two beer Installation Kit	15	\$340.00
WB-IK-3	Three Beer Installation Kit	19	\$498.00
WB-IK-4	Four Beer Installation Kit	21	\$672.00

Beer Pump/Regulator Station Installation Kits

Beer Pump Station Kits include one product & one gas keg leader, low-pressure pump regulator, beer pump, low-pressure keg pressure regulator, wall mount bracket & EBD for each beer.

Keg connectors are not included. (For more beers use multiples of 2, 3 or 4 pump kits)

For example a 10-beer beer pump install kit will be (2) 4-pump panels & (1) 2-pump panel.



Model Number	Description	Weight	List Price
WB-BP-IK-2	Two beer Installation Kit with 2 Beer Pumps and 2 Empty Beer Detectors	20	\$998.00
WB-BP-IK-3	Three Beer Installation Kit with 3 Beer Pumps and 3 Empty Beer Detectors	23	\$1,450.00
WB-BP-IK-4	Four Beer Installation Kit with 4 Beer Pumps and 4 Empty Beer Detectors	26	\$1,920.00

ICE VIPER Insulated Beer Conduit

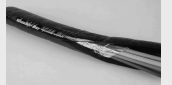
Includes 1 Barrier Tube per beer, two 1/2" ID Glycol recirculation lines, in a foil jacket, and PVC Jacketed, 3/4" wall closed-cell insulation. **WB-VBC-12 has (4) 1/2" Glycol lines.**



Model Number	Description	Weight	List Price
WB-VBC-4	Insulated Conduit for 1 to 4 beers - per foot (Approx.10 BTU/hour per foot)	2	\$18.00
WB-VBC-6	Insulated Conduit for 6 beers - per foot (Approx. 11 BTU/hour per foot)	2	\$20.00
WB-VBC-8	Insulated Conduit for 8 beers - per foot (Approx. 11 BTU/hour per foot)	2	\$20.50
WB-VBC-12	Insulated Conduit for 9 to 12 beers - per foot Approx.12 BTU/hour per foot)	2	\$29.50

GLYCOL COOLANT LINE

Includes two or four 1/2" ID Glycol recirculation lines, in a foil jacket, and PVC Jacketed, 3/4" wall closed-cell insulation. **tubing runs from Glycol Chiller to Beer Keg Cooler.**



Model Number	Description	Weight	List Price
WB-GLYCOL COOL	Insulated Conduit for Two 1/2" glycol coolant lines - per foot (Approx.10 BTU/hour per	2	\$8.50
WB-GLYCOL COOL4	Insulated Conduit for Four 1/2" glycol coolant lines - per foot (Approx.10 BTU/hour per	2	\$14.00

Prices subject to change without notice.



BEER BOSS BEER SYSTEM COMPONENTS

FACTORY SUGGESTED LIST PRICE SCHEDULE

EFFECTIVE: JANUARY 1, 2010

System Kits			
CO2 System Kits For systems balanced for operation at 16 pounds of applied pressure or less or systems with Beer Pumps. Includes a tank mount CO2 high pressure regulator, 3/8" ID braided tubing, pressure distribution manifold (multi-station systems) multi-station conduit hardware, clamps, fittings.			
Model Number	Description	Weight	List Price
WB-SK-1	One station System Kit	18	\$160.00
WB-SK-2	Two station System Kit	20	\$240.00
WB-SK-3	Three station System Kit	22	\$270.00
WB-SK-4	Four station System Kit	24	\$306.00
Air/Gas Blender System Kits			
For systems that are balanced for operation at 17 pounds applied pressure or more. Air/Gas Blender System Kits include tank-mount CO2 regulator, oil-less air compressor, charcoal air filter, air/gas blender, fittings and clamps, 3/8" ID braided tubing, and a pressure distribution manifold and multi-station conduit hardware for multiple-station systems only.			
Model Number	Description	Weight	List Price
WB-SK-1-AG	One station Air/Gas Blender System Kit	35	\$2,080.00
WB-SK-2-AG	Two station Air/Gas Blender System Kit	37	\$2,174.00
WB-SK-3-AG	Three station Air/Gas Blender System Kit	39	\$2,200.00
WB-SK-4-AG	Four station Air/Gas Blender System Kit	41	\$2,240.00
Kool Boss and Chill Boss			
Kool Boss Components			
The Kool Boss System is installed in the walk-in cooler, utilizing the cooler's evaporator, to chill beer and beverage conduit. The Kool Boss System must be comprised of a WB-100-G1, a single or dual coil, WB-GL glycol, and Insulated Beer Conduit.			
Model Number	Description	Weight	List Price
WB-100-G1	Kool Boss Glycol Line Chiller with 1 gallon reservoir & 1/3 hp recirc pump	25	\$1,114.00
WB-100-GC1	Single Coil for WB-100-G1 with ceiling mount brackets	10	\$500.00
WB-100-GC2	Dual Coil for WB-100-G1 with ceiling mount brackets	20	\$1,100.00
Chill Boss Components			
The Chill Boss is an ice bank type line chiller with stainless steel cooling coils for chilling water, carbonated water, & beverages.			
Model Number	Description	Weight	List Price
WB-CB-250	1/4 hp Chill Boss with two cooling circuits - for direct draw - 5' max to dispenser	50	\$2,100.00
WB-CB-250-1	1/4 hp Chill Boss with two cooling circuits & recirc pump - 20' run with 5' lift max.	50	\$2,310.00
WB-CB-300	1/3 hp Chill Boss with three cooling circuits - direct draw - 5' max. to dispenser	60	\$2,626.00
WB-CB-300-1	1/3 hp Chill Boss with three cooling circuits and procon recirculation pump	60	\$3,098.00
ACCESSORIES			
Model Number	Description	Weight	List Price
WB-BP-01	Beer Pump with Inlet, Outlet, and Gas Fittings	5	\$176.00
1101-790	Chrome Beer Faucet ONLY, Plated Brass	2	\$48.00
CBT-001	Brass Beer Faucet ONLY, Polished	2	\$50.00
WB-BFL-01	Beer Faucet Lock Assembly with One Key	2	\$117.00
WB-MS-27	Empty Beer Detector (Wall Mount)	3	\$176.00
WB-KC-01	Series Keg Coupler for Sankey Type Kegs	5	\$118.00
BS-SA-21	Air/Gas Blender with two keys	4	\$550.00
BS-SA-22	Charcoal Air Filter with 3/8" barbed in and out fittings and bracket	3	\$350.00
BS-SA-22A	Replacement Charcoal Filter Element for BS-SA-22	1	\$100.00
CD-SYS-13	Air Compressor - Oil-less with tank	22	\$1,386.00
PM-SA-18	Pressure Regulator for Air Compressor	4	\$88.00



BEER BOSS BEER SYSTEM COMPONENTS

FACTORY SUGGESTED LIST PRICE SCHEDULE

EFFECTIVE: JANUARY 1, 2010

ACCESSORIES - Continued			
Model Number	Description	Weight	List Price
PM-FT-14	3/8" Barbed tailpiece / 1/4" SAE hexnut for regulator outlet	0.2	\$5.00
BS-FT-01	Wall Bracket (junction) - 3/8" ID nickel plated brass	1	\$16.00
1101-824	Y" (two-way) Wall Bracket - 3/8" ID - one keg to two lines	1.5	\$25.00
BS-FT-02	Beer Nut (Nickel plated brass)	0.5	\$1.30
BS-FT-03	Neoprene Washer	0.1	\$0.26
BS-FT-04	Beer Tailpiece, barbed 3/16" for 3/16" ID vinyl restriction tubing	0.2	\$2.00
BS-FT-05	Beer Tailpiece, barbed 1/4" for 1/4" ID poly tubing	0.2	\$1.30
BS-FT-06	Beer Tailpiece, barbed 5/16" for 5/16" ID vinyl tubing	0.2	\$1.30
BS-FT-07	Beer Tailpiece, barbed 3/8" for 3/8" ID poly tubing	0.2	\$1.30
1101-545	Union 3/16" ID restriction tubing x 3/8" ID poly beer tubing)	0.1	\$3.80
1101-802	Union, 3/8" poly beer or glycol tubing x 3/8" poly beer or glycol tubing)	0.1	\$3.50
BS-TB-01	Restriction Tubing, 3/16" clear vinyl (per foot)	0.1	\$0.84
BS-TB-02	Air Hose, 5/16" red vinyl (per foot)	0.1	\$0.84
BS-TB-03	Beer Hose, 3/8" ID clear vinyl (per foot)	0.1	\$1.10
PM-TB-02	Braided Air Hose, 3/8" ID (per foot)	0.1	\$0.64
PM-FT-15	14.5 Oetiker clamp (for 3/8" ID poly or barrier beer tubing)	0.01	\$0.64
PM-FT-18	17.0 Oetiker clamp (for red vinyl air hose)	0.01	\$0.74
PM-FT-16	18.5 Oetiker clamp (for clear vinyl beer hose)	0.01	\$0.74
BB-123	E.B.D. drain line tees	0.01	\$3.20
BS-SA-29	Air-Cooler Blower Kit (120VAC) includes blower and tube to insert into base of tower	5	\$180.00
PM-FT-26	1/2" X 1/2" Splicer (for Glycol Coolant Lines)	0.01	\$6.50
PM-FT-28	1/2" X 3/8" Splicer/Reducer	0.01	\$6.50
BS-FT-17	1/2" Barbed "U" Bend (for Glycol Cooling Line)	0.01	\$10.80
BS-FT-54	1/2" Barbed 90-degree Bend	0.01	\$12.24
RT-038	1/2" Drain line tubing (10 ft.)	0.01	\$5.38
WB-BB-L	6" Leg Set for Beer Boss Glycol Chiller (set of 4)	0.01	\$192.00
CD-EV-7	3/8" Stainless Steel "Y" Fitting	0.01	\$15.00
WB-BTI-KIT	Beer Tower Installation Kit (Rubatex, Insulation Glue, Tape)	3	\$158.00
BEER BOSS REPLACEMENT PARTS			
BB-001	Motor, for Glycol Recirculation Pump 1/3 hp, 110 VOLT	15	\$228.00
BB-006	Pump, Glycol Recirculation, 100 GPH Brass	8	\$174.00
BB-00X	Key, Pump Drive (shaft)	0.1	\$4.72
BB-010	Clamp, Pump to Motor	0.1	\$5.26
BB-004	Insulation, Recirculation Pump	0.1	\$5.98
BB-011	Ranco Temperature Control	1	\$136.50
BB-047	Motor, Glycol Recirculation Pump 1/3 hp, 208 VOLT	15	\$424.00
WB-SK-1-NC	Dual Mix CO2/Nitro Blender 60%CO2-40%Nitro & 25%CO2-75% Nitro	5	\$1,784.00

BEERLISTPRICE 2009

Prices subject to change without notice.

REV123109