

WB-BB-750-*

* 1 = One Pump, 2 = Two Pumps, 3 = Three Pumps

3/4 HP GLYCOL LINE CHILLER

- REFRIGERATION: Air-Cooled:** 3/4 HP, R134a Condensing Unit
4700 BTU Output
- NOTE:** 12" clearance required on sides for optimum air flow maintenance.
- ELECTRICAL: One Pump:** 208 Volt AC, 60 hZ, 1 phase, 12.0 Full Load Amps
Dedicated 20 Amp circuit is required
Maximum Fuse / HACR Breaker: 20 Amp
Includes six foot cord with NEMA 6-15P grounded plug.
- Two Pumps:** 208 Volt AC, 60 hZ, 1 phase, 14.3 Full Load Amps
Dedicated 25 Amp circuit is required
Maximum Fuse / HACR Breaker: 25 Amp
Includes six foot cord with NEMA 6-20P grounded plug.
- Three Pumps:** 208 Volt AC, 60 hZ, 1 phase, 16.6 Full Load Amps
Dedicated 25 Amp circuit is required
Maximum Fuse / HACR Breaker: 25 Amp
Includes six foot cord with NEMA L6-30P grounded plug.

RECIRCULATING PUMP: 100 GPH, Brass Recirculation Duty

RECIRCULATING MOTOR: 1/3 hp (2.3 Amp each)

DIMENSIONS: Height: 29-1/2"
Width: 34-1/4"
Depth: 20-1/8"

WEIGHT: Shipping: 320#
Operating: 350#

COOLANT CAPACITY: 10 U.S. Gallons **
(5 gallons glycol plus 5 gallons water)

MAXIMUM CONDUIT LENGTH: 350'

OPTIONS: 6" Adjustable Legs (up to 7")
Additional Pump and Motor Kit



WB-BB-750-1



**Includes:
Six-foot long
cord with
NEMA 6-15P
grounded plug.**

WB-BB-750-2



**Includes:
Six-foot long
cord with
NEMA 6-20P
grounded plug.**

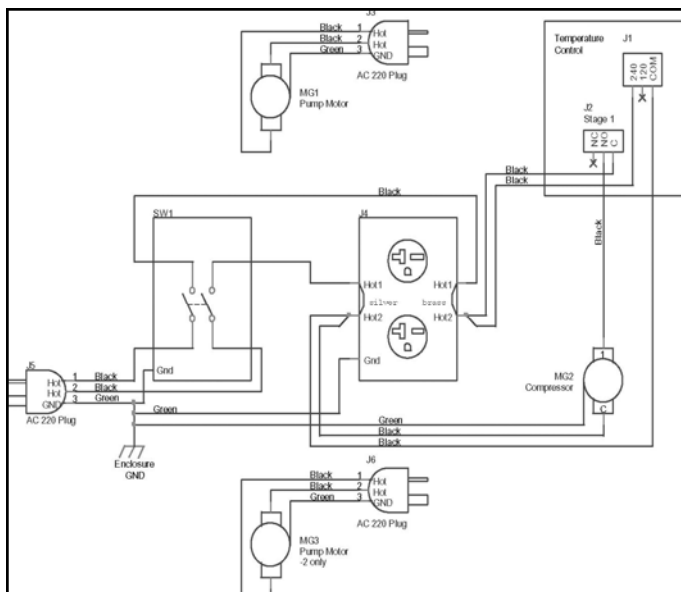
WB-BB-750-3



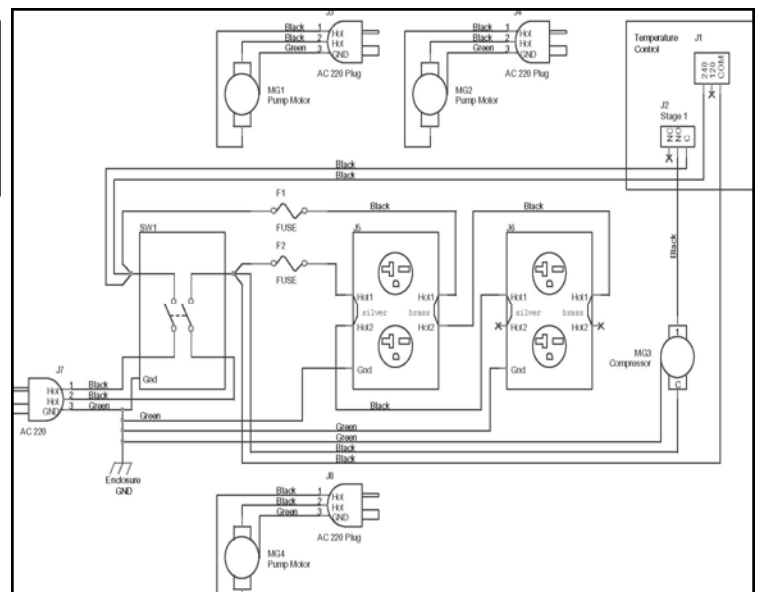
**Includes:
Six-foot long
cord with
NEMA L6-30P
grounded plug.**

**Add one gallon of coolant mixture (50% glycol plus 50% water) per 100 feet of Conduit

WB-BB-750-1 and WB-BB-750-2



WB-BB-750-3



BB750 SPECS. pub

REV061108