

WB-BB-300-1

JOB: _____ ITEM: _____


1/3 HP GLYCOL LINE CHILLER WITH ONE PUMP

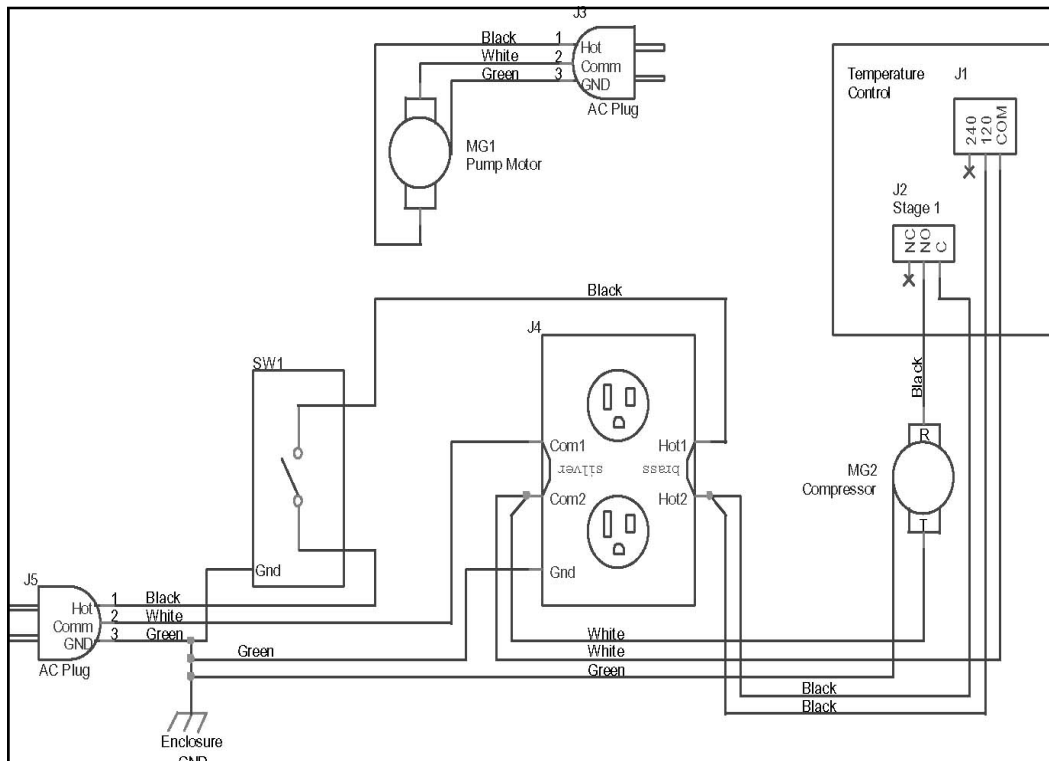
- REFRIGERATION:** Air-Cooled: 1/3 HP, R134a Condensing Unit
2000 BTU Output
- NOTE:** 12" clearance required on on sides for optimum air flow maintenance.
- ELECTRICAL:** 115 Volt AC, 60 hZ, 1 phase, 14 Full Load Amps
Dedicated 20 Amp circuit is required
Maximum Fuse / HACR Breaker: 20 Amp
Includes six-foot cord with NEMA 5-20P grounded plug.
- RECIRCULATING PUMP:** One 100 GPH, Brass Recirculation Duty
- RECIRCULATING MOTOR:** 1/3 hp (6.2 Amp)
- DIMENSIONS:** Height: 26"
Width: 26"
Depth: 15-1/4"
- WEIGHT:** Shipping: 225#
Operating: 250#
- COOLANT CAPACITY:** 6 U.S. Gallons **
(3 gallons glycol plus 3 gallons water)
- MAXIMUM CONDUIT LENGTH:** 175'
- OPTIONS:** 6" Adjustable Legs (up to 7")
Additional Recirculating Pump and Motor Kit



** Add one gallon of coolant mixture (50% glycol plus 50% water) per 100 feet of Conduit




**Includes:
Six-foot long
cord with
NEMA 5-20P,
grounded plug.**



BB SPECS. pub

REV061108