

WB-BB-LP-500-*

* 1 = One Pump, 2 = Two Pumps

JOB: _____ ITEM: _____


LOW PROFILE 1/2 HP GLYCOL LINE CHILLER

- REFRIGERATION: Air-Cooled:** 1/2 HP, R134a Condensing Unit
3000 BTU Output
- NOTE:** 12" clearance required on on sides for optimum air flow maintenance.
- ELECTRICAL: One Pump:** 115 Volt AC, 60 hZ, 1 phase, 17.0 Full Load Amps
Dedicated 25 Amp circuit is required
Maximum Fuse / HACR Breaker: 25 Amp
Includes six foot cord with NEMA L5-30P grounded plug.
- Two Pumps:** 115 Volt AC, 60 hZ, 1 phase, 23.2 Full Load Amps
Dedicated 40 Amp circuit is required
Maximum Fuse / HACR Breaker: 40 Amp
Includes six foot cord with NEMA L5-30P grounded plug.
- plug.RECIRCULATING PUMP:** 100 GPH, Brass Recirculation Duty
- RECIRCULATING MOTOR:** 1/3 hp (6.2 Amp each)
- DIMENSIONS: Height:** 15"
Width: 22-3/4"
Depth: 24-1/4"
- WEIGHT: Shipping:** 225#
Operating: 250#
- COOLANT CAPACITY:** 6 U.S. Gallons **
(3 gallons glycol plus 3 gallons water)



WB-BB-LP-500-1
WB-BB-LP-500-2



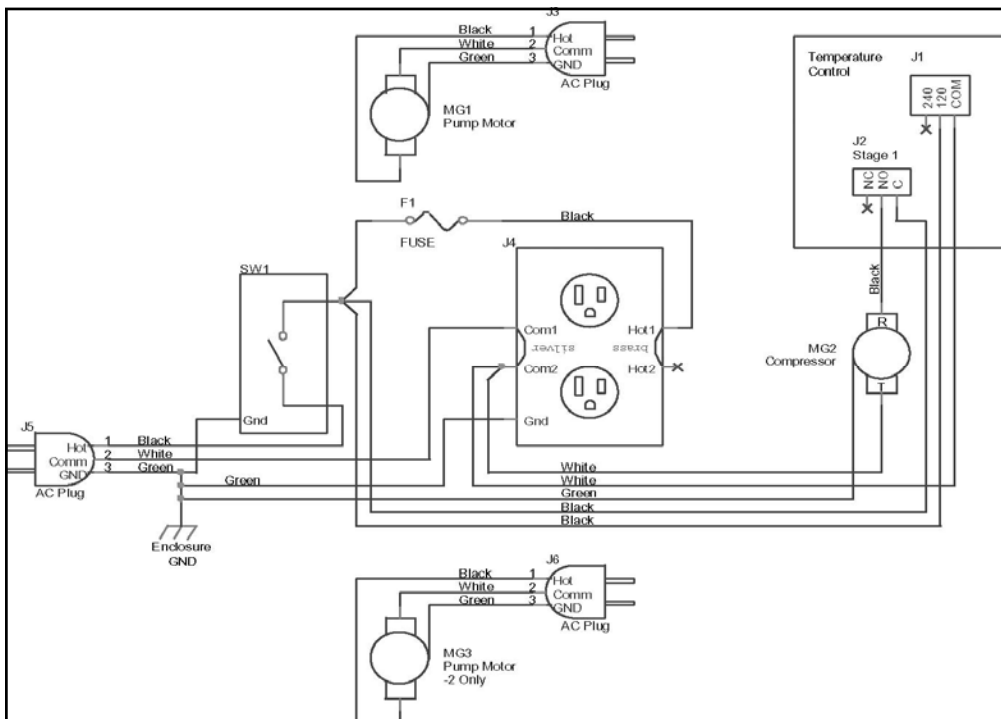


**Includes:
Six-foot long
cord with
NEMA L5-30P
grounded plug.**

MAXIMUM CONDUIT LENGTH: 250'

OPTIONS: 6" Adjustable Legs (up to 7")
Additional Recirculating Pump and Motor Kit

** Add one gallon of coolant mixture (50% glycol plus 50% water) per 100 feet of Conduit



BB500 LP SPECS. pub

REV061108