

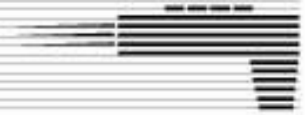
FACTORY SUGGESTED INSTALLATION CHARGES  
WUNDER-BAR SYSTEM III LIQUOR CONTROL SYSTEMS  
EFFECTIVE: JANUARY 1, 2010

The following charges are for normal installations that do not require line runs in excess of 50 feet. Normal installations do not include penetration of cement, lines that run overhead or through a suspended ceiling, going through custom bar or counter tops, or other difficult circumstances determined to be out of the ordinary. For line runs over 50 feet, an additional per foot labor charge will be added. Please consult notes on bottom of page. Electrical outlets, connections and special fixtures, plumbing, and other construction type work to be done or supplied by others.

Installation charges are based on performing installations during service agency's normal operating business hours. After hours or weekends may be subject to additional overtime charges, over and beyond charges shown. Installation Charges include a 90-day labor warranty.

(\*Use these installation figures for Wunder-Bar Mini-Reserve Systems.)

MODEL NO.	DESCRIPTION	NET INSTALLATION CHARGE
*WB-6L-1-III	1 station, 6 brand, 18 bottle system	\$1,325.00
*WB-6L-2-III	2 station, 6 brand, 24 bottle system	\$1,495.00
WB-6L-3-III	3 station, 6 brand, 36 bottle system	\$1,995.00
WB-6L-4-III	4 station, 6 brand, 36 bottle system	\$2,205.00
WB-6L-5-III	5 station, 6 brand, 36 bottle system	\$2,575.00
WB-6L-6-III	6 station, 6 brand, 36 bottle system	\$2,925.00
WB-6L-7-III	7 station, 6 brand, 36 bottle system	\$3,230.00
WB-6L-8-III	8 station, 6 brand, 36 bottle system	\$3,525.00
*WB-8L-1-III	1 station, 8 brand, 36 bottle system	\$1,465.00
*WB-8L-2-III	2 station, 8 brand, 36 bottle system	\$1,825.00
WB-8L-3-III	3 station, 8 brand, 36 bottle system	\$2,260.00
WB-8L-4-III	4 station, 8 brand, 36 bottle system	\$2,620.00
WB-8L-5-III	5 station, 8 brand, 48 bottle system	\$3,150.00
WB-8L-6-III	6 station, 8 brand, 48 bottle system	\$3,525.00
WB-8L-7-III	7 station, 8 brand, 48 bottle system	\$3,670.00
WB-8L-8-III	8 station, 8 brand, 48 bottle system	\$3,920.00
*WB-12L-1-III	1 station, 12 brand, 36 bottle system	\$1,600.00
*WB-12L-2-III	2 station, 12 brand, 36 bottle system	\$2,150.00
WB-12L-3-III	3 station, 12 brand, 36 bottle system	\$2,485.00
WB-12L-4-III	4 station, 12 brand, 36 bottle system	\$3,285.00
WB-12L-5-III	5 station, 12 brand, 48 bottle system	\$3,810.00
WB-12L-6-III	6 station, 12 brand, 48 bottle system	\$4,360.00
WB-12L-7-III	7 station, 12 brand, 48 bottle system	\$4,860.00
WB-12L-8-III	8 station, 12 brand, 48 bottle system	\$5,395.00
*WB-16L-1-III	1 station, 16 brand, 48 bottle system	\$1,850.00
*WB-16L-2-III	2 station, 16 brand, 48 bottle system	\$2,375.00
WB-16L-3-III	3 station, 16 brand, 48 bottle system	\$2,925.00
WB-16L-4-III	4 station, 16 brand, 48 bottle system	\$3,420.00
WB-16L-5-III	5 station, 16 brand, 48 bottle system	\$3,920.00
WB-16L-6-III	6 station, 16 brand, 72 bottle system	\$4,580.00
WB-16L-7-III	7 station, 16 brand, 72 bottle system	\$5,130.00
WB-16L-8-III	8 station, 16 brand, 72 bottle system	\$5,625.00



FACTORY SUGGESTED INSTALLATION CHARGES FOR  
WUNDER-BAR SYSTEM III LIQUOR CONTROL SYSTEMS  
EFFECTIVE: JANUARY 1, 2010

MODEL NO.	DESCRIPTION	INSTALLATION CHARGE
WB-24L-1-III	1 station, 24 brand, 72 bottle system	\$2,375.00
WB-24L-2-III	2 station, 24 brand, 72 bottle system	\$2,925.00
WB-24L-3-III	3 station, 24 brand, 72 bottle system	\$3,530.00
WB-24L-4-III	4 station, 24 brand, 72 bottle system	\$3,920.00
WB-24L-5-III	5 station, 24 brand, 96 bottle system	\$4,440.00
WB-24L-6-III	6 station, 24 brand, 96 bottle system	\$4,960.00
WB-24L-7-III	7 station, 24 brand, 96 bottle system	\$5,515.00
WB-24L-8-III	8 station, 24 brand, 96 bottle system	\$6,040.00
WB-32L-1-III	1 station, 32 brand, 120 bottle system	\$3,035.00
WB-32L-2-III	2 station, 32 brand, 120 bottle system	\$3,530.00
WB-32L-3-III	3 station, 32 brand, 120 bottle system	\$4,075.00
WB-32L-4-III	4 station, 32 brand, 120 bottle system	\$4,575.00
WB-32L-5-III	5 station, 32 brand, 120 bottle system	\$5,130.00
WB-32L-6-III	6 station, 32 brand, 120 bottle system	\$5,625.00
WB-32L-7-III	7 station, 32 brand, 120 bottle system	\$6,150.00
WB-32L-8-III	8 station, 32 brand, 120 bottle system	\$6,565.00
WB-48L-1-III	1 station, 48 brand, 144 bottle system	\$3,700.00
WB-48L-2-III	2 station, 48 brand, 144 bottle system	\$4,465.00
WB-48L-3-III	3 station, 48 brand, 144 bottle system	\$5,130.00
WB-48L-4-III	4 station, 48 brand, 144 bottle system	\$5,765.00
WB-48L-5-III	5 station, 48 brand, 144 bottle system	\$6,425.00
WB-48L-6-III	6 station, 48 brand, 216 bottle system	\$7,090.00
WB-48L-7-III	7 station, 48 brand, 216 bottle system	\$7,720.00
WB-48L-8-III	8 station, 48 brand, 216 bottle system	\$8,350.00

For line runs over 50 feet; add per station, per foot:

6 brand systems	\$2.90 per foot
8 brand systems	\$3.40 per foot
12 brand systems	\$3.95 per foot
16 brand systems	\$5.25 per foot
24 brand systems	\$6.50 per foot
32 brand systems	\$9.00 per foot
48 brand systems	\$9.40 per foot

Air Compressor \$185.00

INSTALLATION CHARGES INCLUDE A 90 DAY LABOR WARRANTY.

These installation charges are only to be used as an estimate only. Please check with your local Wunder-Bar factory representative, installer or service agency for a more accurate quotation for your specific requirements.